

TABLE:

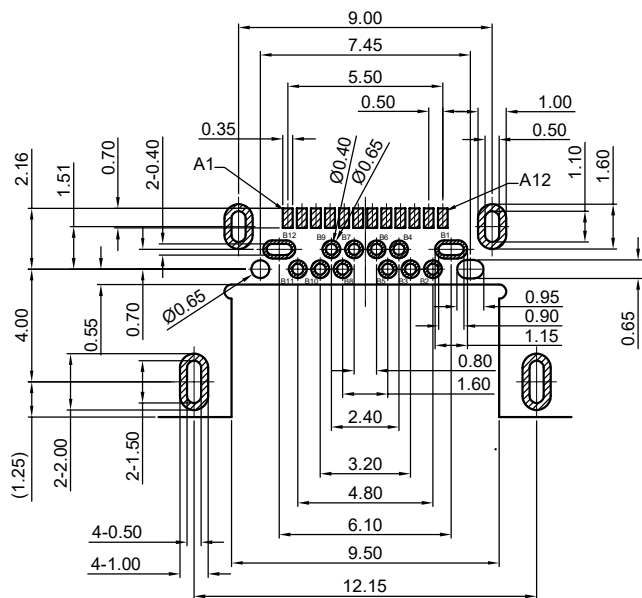
NO	PART	QTY	MATERIAL
1	OUTER SHELL	1	STAINLESS STEEL 304, T=0.20mm, NI 30u" MIN PLATED
2	INNER SHELL	1	STAINLESS STEEL 304, T=0.20mm, NI 30u" MIN PLATED
3	EMI Plate	1	STAINLESS STEEL 301, T=0.10mm, CLEAR ONLY
4	Mid Plate	1	STAINLESS STEEL 301, T=0.15mm, NO PLATED
5	SMT CONTACT	12	COPPER STEEL C18150, CONTACT AREA: Au 3u" Min;
6	DIP CONTACT	12	SOLDER TAIL: TIN, OVER ALL: 50u" Min Ni UNDERPLATED
7	HOUSING	1	LCP BLACK UL94 V-0

CJTconn CHANGJIANG CONNECTORS CO., LTD.

Unit	Scale	Sheet	TITLE
mm	1:1	1 of 3	USB TYPE-C REC. DOUBLE SHELL SINK CLO.32 L=8.60
DRAWN	CHK'D	APPR	
Haisen Li	Diankui Wan	Jack Yin	DRAWING NO.
General Tolerances			THIRD ANGLE PROJECTION
x.xx±0.25 x.xxx±0.20 x.xxxx±0.15 ANGLES ±1°			

REV A0

A0	NEW RELEASE	2021.05.23
REV	DESCRIPTION	DATE

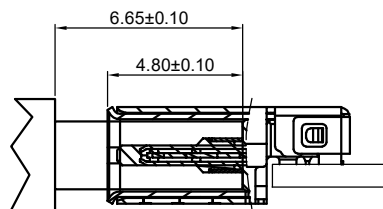


RECOMMEND P.C.B LAYOUT (COMPONENT SIDE)

TOLERANCE FOR PCB LAYOUT IS ± 0.05
KEEP OUT AREA

USB TYPE-C PIN ASSIGNMENTS

PIN NUMBER	SIGNAL NAME	PIN NUMBER	SIGNAL NAME
A1	GND	B12	GND
A2	SSTXp1	B11	SSRXp1
A3	SSTXn1	B10	SSRXn1
A4	VBUS	B9	VBUS
A5	CC1	B8	SBU2
A6	Dp1	B7	Dn2
A7	Dn1	B6	Dp2
A8	SBU1	B5	CC2
A9	VBUS	B4	VBUS
A10	SSRXn2	B3	SSTXn2
A11	SSRXp2	B2	SSTXp2
A12	GND	B1	GND



MATED CONDITION (REF.)

REV	DESCRIPTION	DATE
A0	NEW RELEASE	2021.05.23
REV	DESCRIPTION	DATE

SPECIFICATIONS:

- ELECTRICAL PERFORMANCE:
 - CURRENT RATING: 5 AMPS. FOR TOTAL VBUS/GND PINS; 1.25AMPS FOR CC PIN, 0.25 AMPS. FOR ALL OTHER CONTACT.
 - VOLTAGE RATING: 20V DC/AC (RMS. MAX)
 - CONTACT RESISTANCE: 40mΩ MAX INITIAL. 50mΩ MAX AFTER TEST
 - INSULATION RESISTANCE: 100MΩ MIN
 - DIELECTRIC WITHSTAND VOLTAGE, AC 100V FOR 1 MINUTE.
- MECHANICAL PERFORMANCE:
 - INSERTION FORCE: 5~20N.
 - EXTRACTION FORCE: 8~20N.
 - DURABILITY: 10000 CYCLES.
- ENVIRONMENTAL PERFORMANCE:
 - OPERATING TEMPERATURE: -40°C~+105°C.
- IR REFLOW:
 - THE PEAK TEMPERATURE ON THE BOARD SHALL BE MAINTAINED FOR 10 SECONDS AT 260°C.
- COMPLIANCE WITH ROHS REQUIREMENTS.

Ordering Information:

CJ-CF051 - 24P - *** - ***

1 2 3

1. Part NO.

2. Finish:

(Blank): Select Gold: 3μm [0.076μm] Min.

Select Reflowed Tin: 60μm [1.5μm] Min

Overall Nickel Underplate: 50μm [1.25μm] Min.

G15: Select Gold: 15μm [0.38μm] Min.

Select Reflowed Tin: 60μm [1.5μm] Min

Overall Nickel Underplate: 50μm [1.25μm] Min.

G30: Select Gold: 30μm [0.76μm] Min.

Select Reflowed Tin: 60μm [1.5μm] Min

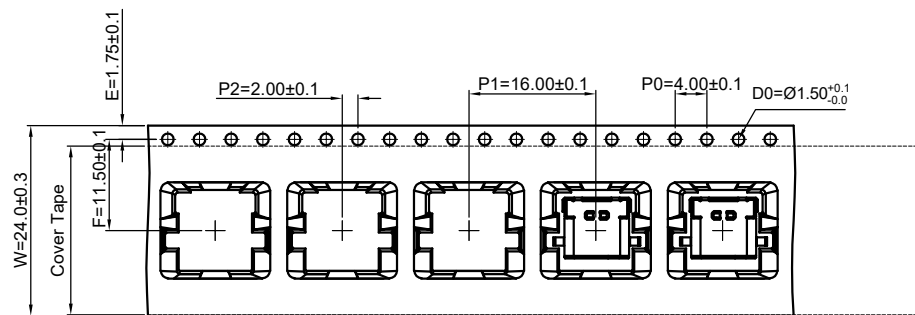
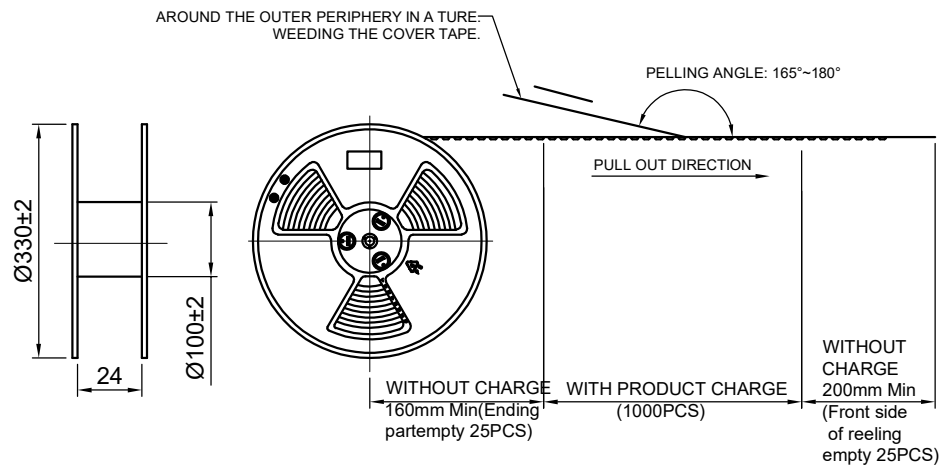
Overall Nickel Underplate: 50μm [1.25μm] Min.

3. Packing:

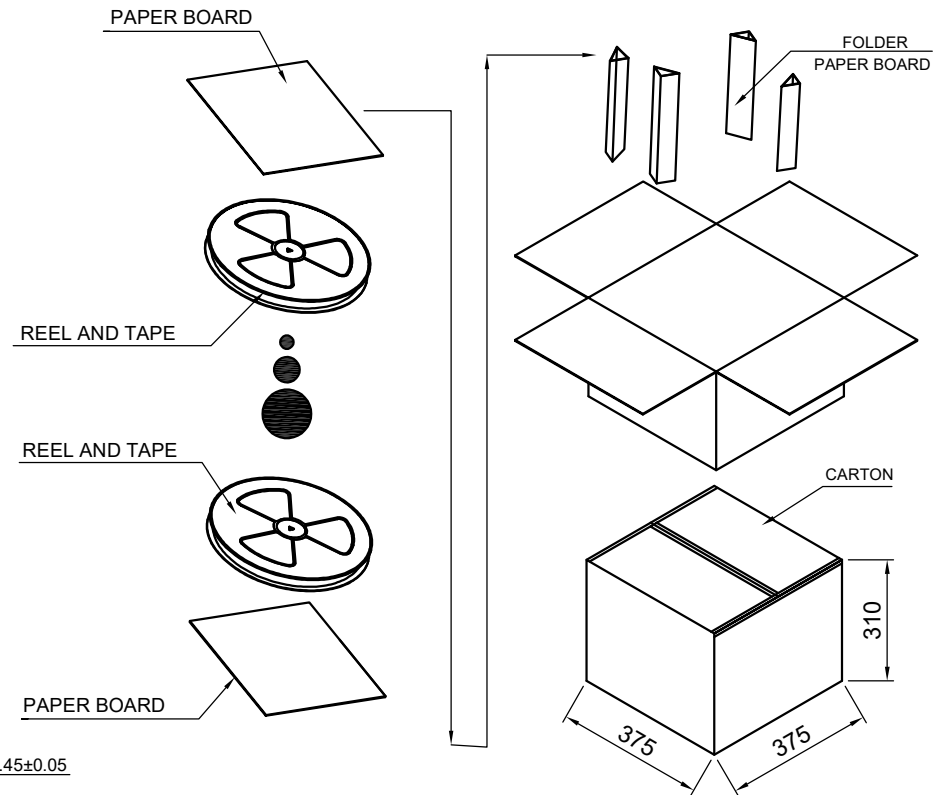
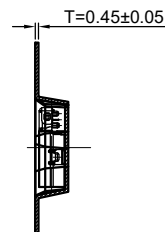
(Blank): Tape & Reel



Unit	Scale	Sheet	TITLE
mm	1:1	2 of 3	USB TYPE-C REC. DOUBLE SHELL SINK CL0.32 L=8.60
DRAWN	CHK'D	APPR	
Haisen Li	Diankui Wan	Jack Yin	
General Tolerances			THIRD ANGLE PROJECTION
x.xx±0.25 x.xxx±0.20 x.xxxx±0.15 ANGLES ±1°			DRAWING NO.
			CJ-CF051-24P
			REV A0



PULL OUT DIRECTION



	REEL	CARTON
CONNECTOR (PCS)	1000	10000

CJTconn CHANGJIANG CONNECTORS CO.,LTD.			
Unit	Scale	Sheet	TITLE
mm	1:1	3 of 3	USB TYPE-C REC. DOUBLE SHELL SINK CL0.32 L=8.60
DRAWN	CHK'D	APPR	
Haisen Li	Diankui Wan	Jack Yin	
General Tolerances		THIRD ANGLE PROJECTION	DRAWING NO.
x.xx±0.25 x.xxx±0.20 x.xxxx±0.15 ANGLES ±1°			CJ-CF051-24P
A0	NEW RELEASE		2021.05.23
REV	DESCRIPTION	DATE	

A0	NEW RELEASE	2021.05.23
REV	DESCRIPTION	DATE