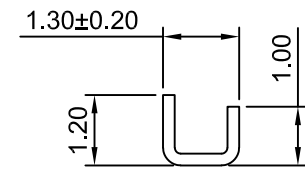


Ordering Information:
 A2550-T - *** - ***
 1 2 3

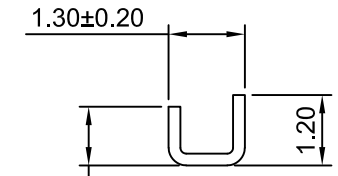
1.Part NO.
 2.Finish

- (Blank): Mating Area: 80~120µin (2.03µm~3.05µm) . Tin or 1µin (0.025µm) MIN. Gold
 Crimp Area: 80~120µin (2.03µm~3.05µm) . Tin
 All Area: 30~50µin(0.76µm~1.27µm) . Nickel
- TG: Mating Area: 80~120µin (2.03µm~3.05µm) . Tin
 Crimp Area: 1µin (0.025µm) MIN. Gold
 All Area: 30~50µin(0.76µm~1.27µm) . Nickel
- GG: Mating Area:1µin (0.025µm) MIN. Gold
 Crimp Area: 1µin (0.025µm) MIN. Gold
 All Area: 30~50µin(0.76µm~1.27µm) . Nickel
- GG2: Mating Area:1µin (0.051µm) MIN. Gold
 Crimp Area: 1µin (0.051µm) MIN. Gold
 All Area: 30~50µin(0.76µm~1.27µm) . Nickel
- GG3: Mating Area:1µin (0.076µm) MIN. Gold
 Crimp Area: 1µin (0.076µm) MIN. Gold
 All Area: 30~50µin(0.76µm~1.27µm) . Nickel
- GT15: Mating Area: 15µin (0.38µm) MIN. Gold
 Crimp Area: 80~120µin (2.03µm~3.05µm) . Tin
 All Area: 30~50µin(0.76µm~1.27µm) . Nickel
- GT30: Mating Area: 30µin (0.76µm) MIN. Gold
 Crimp Area: 80~120µin (2.03µm~3.05µm) . Tin
 All Area: 30~50µin(0.76µm~1.27µm) . Nickel
- GG15: Mating Area: 15µin (0.38µm) MIN. Gold
 Crimp Area: 1µin (0.025µm) MIN. Gold
 All Area: 30~50µin(0.76µm~1.27µm) . Nickel
- GG30: Mating Area: 30µin (0.76µm) MIN. Gold
 Crimp Area: 1µin (0.025µm) MIN. Gold
 All Area: 30~50µin(0.76µm~1.27µm) . Nickel

3.Winding Direction
 (Blank): TYPE 1
 2: TYPE 2
 3: TYPE 3



SEC:A-A



SEC:B-B

Ordering information & Specifications

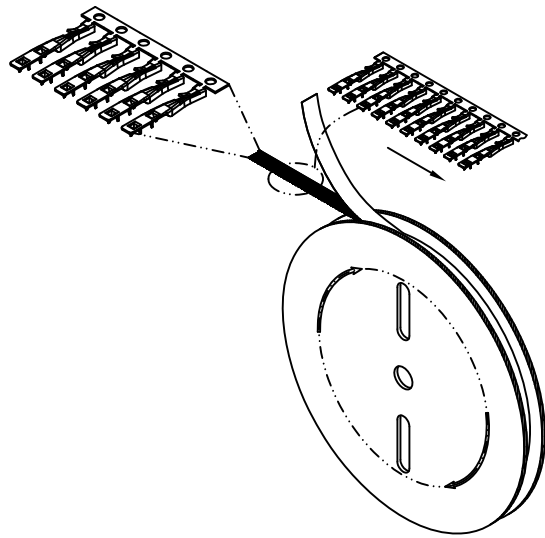
Unit:mm

Part NO.	Wire Range	Insultion O.D.	Material	Finish	Qty/reel
A2550-TP	FFC WIRE	-----	Phosphor Bronze	Tin over Nickel	20,000 PCS
A2550-GP	FFC WIRE	-----	Phosphor Bronze	Gold over Nickel	20,000 PCS

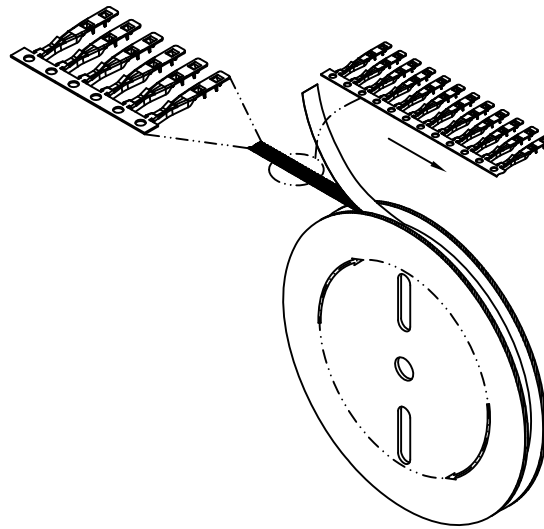
REV	DESCRIPTION	DATE
A3	ADD THE SIZE & SHEET 2	2020.08.06
A2	CHANGE THE DRAWING	2017.03.30
A1	CHANGE THE TOLERANCE	2011.10.25
A0	NEW RELEASE	2005.05.10

CJTconn CHANGJIANG CONNECTORS CO.,LTD.

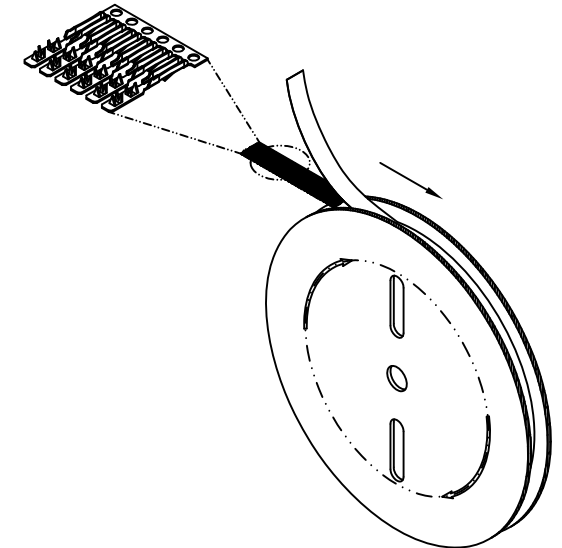
Unit	Scale	Sheet	TITLE
mm	8:1	1 of 2	2.54mm PITCH CRIMP FLEX TERMINAL
DRWN	CHK'D	APPR	
Dengchun Yi	Diankui Wan	Jack Yin	DRAWING NO.
General Tolerances			THIRD ANGLE PROJECTION
x,xx±0.25 x,xxx±0.20 x,xxxx±0.15 ANGLES ±1°			A2550-T
			REV A3



TYPE 1



TYPE 2



TYPE 3

WINDING DIRECTION

Ordering information & Specifications

Unit:mm

Part NO.	Wire Range	Insultion O.D.	Material	Finish	Qty/reel
A2550-TP	FFC WIRE	-----	Phosphor Bronze	Tin over Nickel	20,000 PCS
A2550-GP	FFC WIRE	-----	Phosphor Bronze	Gold over Nickel	20,000 PCS

REV	DESCRIPTION	DATE
A3	ADD THE SIZE & SHEET 2	2020.08.06
A2	CHANGE THE DRAWING	2017.03.30
A1	CHANGE THE TOLERANCE	2011.10.25
A0	NEW RELEASE	2005.05.10

CJT <small>conn</small> CHANGJIANG CONNECTORS CO.,LTD.			
Unit	Scale	Sheet	TITLE
mm	8:1	2 of 2	2.54mm PITCH CRIMP FLEX TERMINAL
DRWN	CHK'D	APPR	
Dengchun Yi	Diankui Wan	Jack Yin	DRAWING NO.
General Tolerances		THIRD ANGLE PROJECTION	REV
x.x±0.25 x.xx±0.20 x.xxx±0.15 ANGLES ±1°			A2550-T A3