

Ordering Information:

A2549-TCA-N-L - **
1 2

1.Part NO.

2.Finsh:

(Blank):Tin over Nickel

MT:Matte Tin over Nickel

G3:Select Gold:3µin[0.076µm] MIN.

Select Matte Tin: 80µin[2.03µm] MIN.

Overall Nickel Underplate: 30µin[0.76µm] MIN.

G4:Select Gold:4µin[0.102µm] MIN.

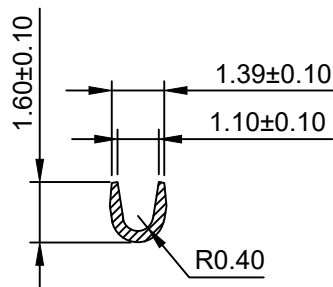
Select Matte Tin: 80µin[2.03µm] MIN.

Overall Nickel Underplate: 30µin[0.76µm] MIN.

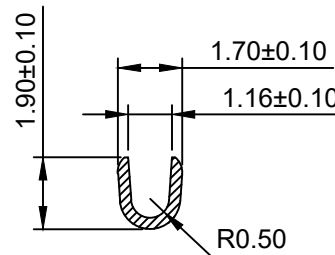
G5:Select Gold:5µin[0.127µm] MIN.

Select Matte Tin: 80µin[2.03µm] MIN.

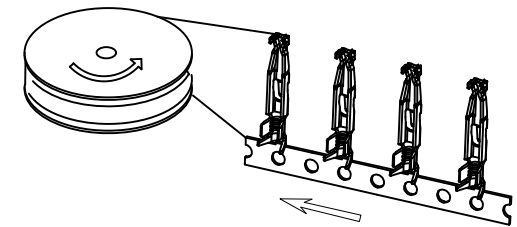
Overall Nickel Underplate: 30µin[0.76µm] MIN.



SEC:A-A



SEC:B-B



Reel Direction

Winding Direction

Ordering information & Specifications

Unit:mm

Part No	Wire Range	Insultion O.D.	Material	Finish	Qty/reel
A2549-TCA-N-L	AWG#24-#26	0.9~1.15mm	Copper Alloy	Tin over Nickel	-
A2549-GCA-N-L	AWG#24-#26	0.9~1.15mm	Copper Alloy	Gold over Nickel	-

REV	DESCRIPTION	DATE
A0	NEW RELEASE	2019.07.03

CJTconn CHANGJIANG CONNECTORS CO.,LTD.

Unit	Scale	Sheet	TITLE
mm	5:1	1 of 1	
DRWN	APPR		2.54mm(.1000in)Pitch Crimp Terminal
Carrie Zhang	Jack Yin		
General Tolerance	THIRD ANGLE PROJECTION		DRAWING NO .
x.x±0.25 x.xx±0.20 x.xxx±0.15 ANGLES ±1°			A2549-TCA-N-L
			REV A0