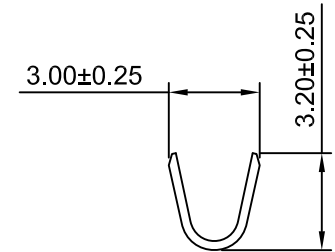
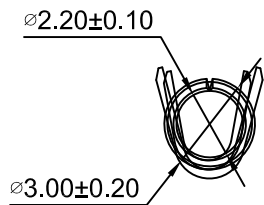


SEC: A-A



SEC: A-A



Ordering information & Specifications

Unit:mm

| Part No | Wire Range | Insulation O.D. | Material | Finish | Qty/reel |
|-------------|------------|-----------------|----------|------------------|-----------|
| C5030F-TB-B | AWG#16-#24 | 3.50mm(max) | Brass | Tin over Nickel | 5,000 PCS |
| C5030F-GB-B | AWG#16-#24 | 3.50mm(max) | Brass | Gold over Nickel | 5,000 PCS |

| REV | DESCRIPTION | DATE |
|-----|-------------|------------|
| A0 | NEW RELEASE | 2020.07.15 |

CJT CHANGJIANG CONNECTORS CO.,LTD.

| | | | |
|---|-------------|----------|-----------------------------------|
| Unit | Scale | Sheet | TITLE |
| mm | 4:1 | 1 of 1 | CRIMP TERMINAL SOCKET CLASPCON |
| DRWN | CHK'D | APPR | |
| Dengchun Yi | Diankui Wan | Jack Yin | DRAWING NO. |
| General Tolerances | | | THIRD ANGLE PROJECTION |
| x.x±0.25 x.xx±0.20 x.xxx±0.15 ANGLES ±1° | | | C5030F-T-B REV A0 |