

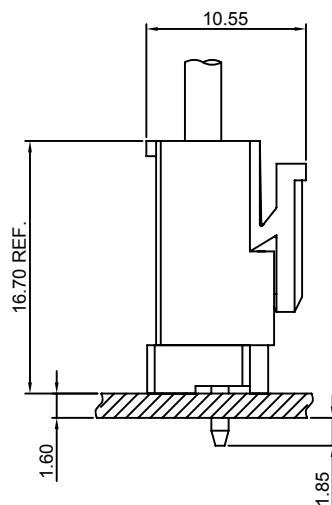
## Specifications

- Current rating:10A AC,DC
- Voltage rating:250V AC,DC
- Temperature range:-40°C~+105°C
- Contact resistance:10mΩMax.
- Insulation resistance:1000MΩMin.
- Withstanding voltage:1500V AC/minute
- \*Compliant with RoHS and REACH\*
- \*Meet the HF/Halogen Free,GWT/Glow wire Test (IEC60335-1) request,need to customize\*
- \*Contact CJT for details\*

## Standards



## Assembly layout



### A5001H-XP

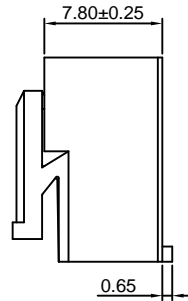
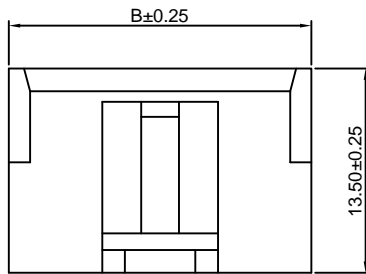
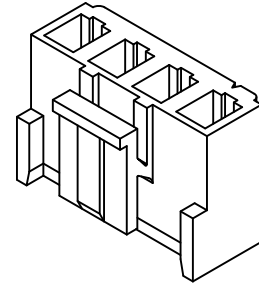
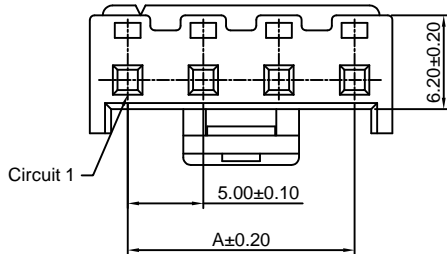
5.00mm pitch Housing

**Reference Informations:**

- \*Material:Nylon 66,UL94V-0
- \*Suitable CJT A3963-T(-H) series Terminal
- \*Mates with CJT A5001WV-XP series Wafer
- \*Color:White

**Ordering Information:**

- A5001H-XP - \*\*\*  
 1 2
- 1.Part No.
  - 2.Material:  
 (blank):Nylon 66, UL94V-0  
 GWT:Nylon 66, UL94V-0,GWT 750°C



**Ordering Information & Dimensions:**

PART NO.	Dimensions	
	A	B
2P	5.00	10.00
3P	10.00	15.00
4P	15.00	20.00

Unit: mm

### A5001HA-XP

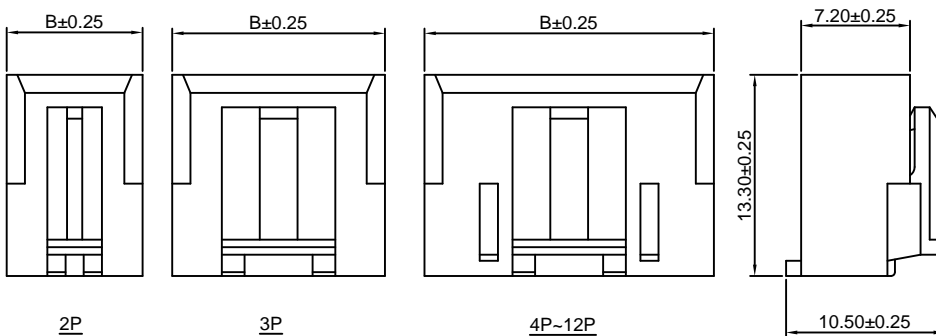
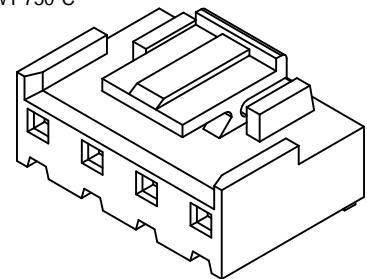
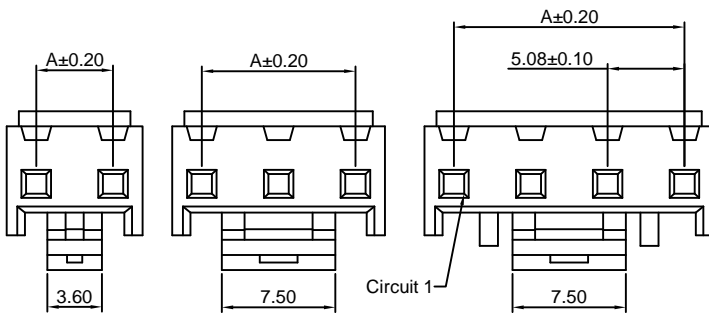
5.08mm pitch Housing

**Reference Informations:**

- \*Material:Nylon 66,UL94V-0
- \*Suitable CJT A3963-T(-H) series Terminal
- \*Mates with CJT A5001WVA,WRA-XP series Wafer
- \*Color:Natural

**Ordering Information:**

- A5001HA-XP - \*\*\*  
 1 2
- 1.Part No.
  - 2.Material:  
 (blank):Nylon 66, UL94V-0  
 GWT:Nylon 66, UL94V-0,GWT 750°C



**Ordering Information & Dimensions:**

PART NO.	Dimensions	
	A	B
2P	5.08	8.98
3P	10.16	14.06
4P	15.24	19.14
5P	20.32	24.22
6P	25.40	29.30
7P	30.48	34.38
8P	35.56	39.46
9P	40.64	44.54
10P	45.72	49.62
11P	50.80	54.70
12P	55.88	59.78

Unit: mm

### A5001WV-XP

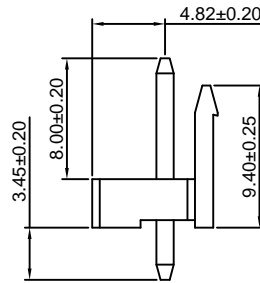
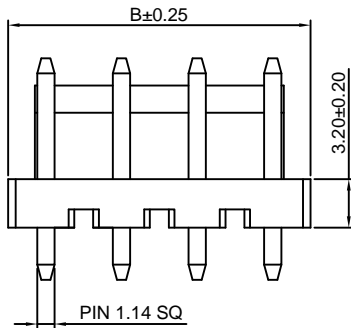
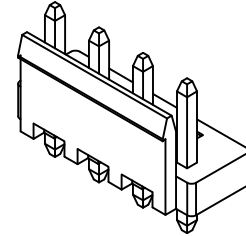
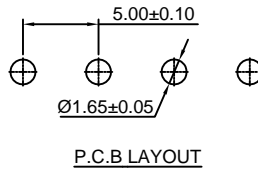
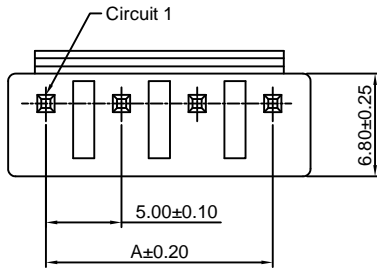
5.00mm pitch 180° Wafer

**Reference Informations:**

- \*Material:Pin:Brass/Tin over Nickel  
Insulator:Nylon 66,UL94V-0
- \*Mates with CJT A5001H-XP series Housing
- \*Color:White

**Ordering Information:**

- A5001WV-XP - \*\*\*  
 $\frac{1}{2}$   
 1.Part No.  
 2.Material:  
 (blank):Nylon 66, UL94V-0  
 GWT:Nylon 66, UL94V-0,GWT 750°C



**Ordering Information & Dimensions:**

PART NO.	Dimensions	
	A	B
2P	5.00	10.00
3P	10.00	15.00
4P	15.00	20.00

Unit: mm

### A5001WVA-XP

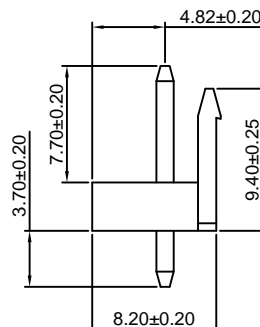
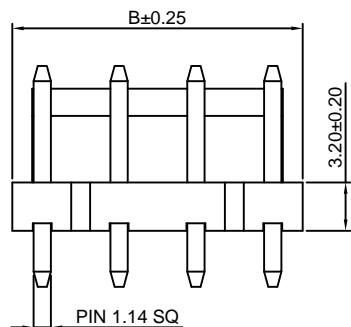
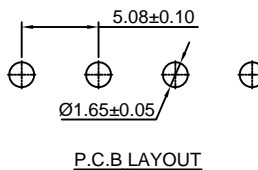
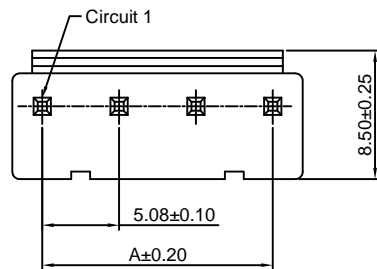
5.08mm pitch 180° Wafer

**Reference Informations:**

- \*Material:Pin:Brass/Tin over Nickel  
Insulator:Nylon 66,UL94V-0
- \*Mates with CJT A5001HA-XP series Housing
- \*Color:White

**Ordering Information:**

- A5001WVA-XP - \*\*\*  
 $\frac{1}{2}$   
 1.Part No.  
 2.Material:  
 (blank):Nylon 66, UL94V-0  
 GWT:Nylon 66, UL94V-0,GWT 750°C



**Ordering Information & Dimensions:**

PART NO.	Dimensions	
	A	B
2P	5.08	9.04
3P	10.16	14.12
4P	15.24	19.20
5P	20.32	24.28
6P	25.40	29.36
7P	30.48	34.44
8P	35.56	39.52
9P	40.64	44.60
10P	45.72	49.68
11P	50.80	54.76
12P	55.88	59.84

Unit: mm

### A5001WVA-F-XP

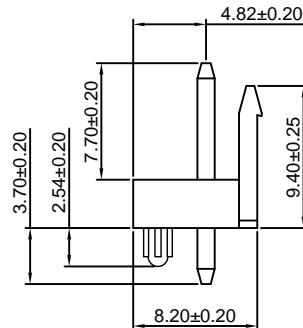
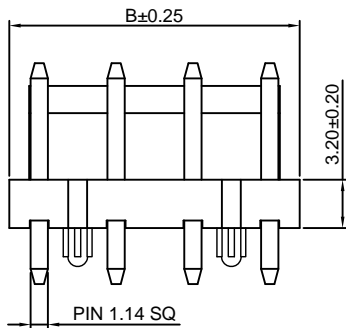
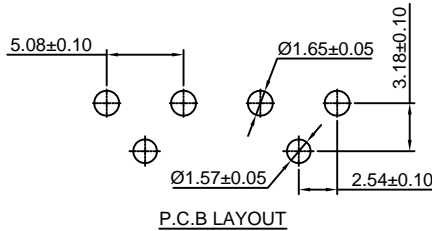
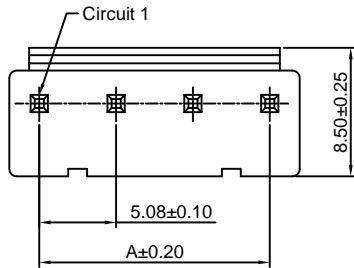
5.08mm pitch 180° Wafer With Foot

**Reference Informations:**

- \*Material:Pin:Brass/Tin over Nickel  
Insulator:Nylon 66,UL94V-0
- \*Mates with CJT A5001HA-XP series Housing
- \*Color:White

**Ordering Information:**

- A5001WVA-F-XP - \*\*\*  
1 2
- 1.Part No.
- 2.Material:  
(blank):Nylon 66, UL94V-0  
GWT:Nylon 66, UL94V-0,GWT 750°C



**Ordering Information & Dimensions:**

PART NO.	Dimensions	
	A	B
2P	5.08	9.04
3P	10.16	14.12
4P	15.24	19.20
5P	20.32	24.28
6P	25.40	29.36
7P	30.48	34.44
8P	35.56	39.52
9P	40.64	44.60
10P	45.72	49.68
11P	50.80	54.76
12P	55.88	59.84

Unit: mm

### A5001WRA-XP

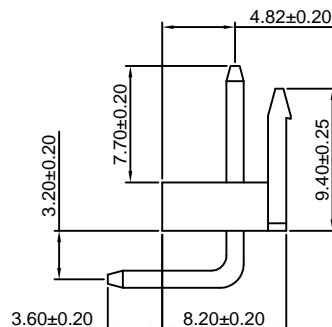
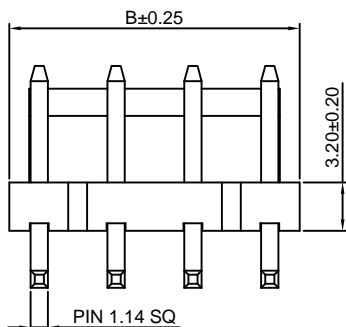
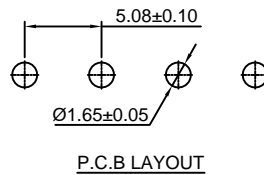
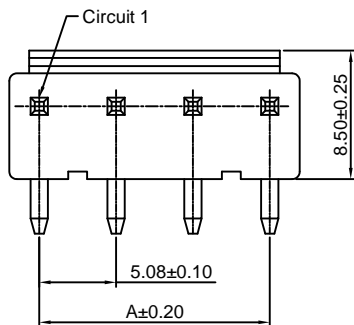
5.08mm pitch 90° Wafer

**Reference Informations:**

- \*Material:Pin:Brass/Tin over Nickel  
Insulator:Nylon 66,UL94V-0
- \*Mates with CJT A5001HA-XP series Housing
- \*Color:White

**Ordering Information:**

- A5001WRA-XP - \*\*\*  
1 2
- 1.Part No.
- 2.Material:  
(blank):Nylon 66, UL94V-0  
GWT:Nylon 66, UL94V-0,GWT 750°C



**Ordering Information & Dimensions:**

PART NO.	Dimensions	
	A	B
2P	5.08	9.04
3P	10.16	14.12
4P	15.24	19.20
5P	20.32	24.28
6P	25.40	29.36
7P	30.48	34.44
8P	35.56	39.52
9P	40.64	44.60
10P	45.72	49.68
11P	50.80	54.76
12P	55.88	59.84

Unit: mm