

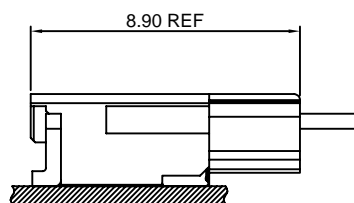
## Specifications

Current rating:3.2A AC,DC  
Voltage rating:350V AC,DC  
Temperature range:-40°C~+105°C  
Contact resistance:10mΩMax.  
Insulation resistance:1000MΩMin.  
Withstanding voltage:1700V AC/minute  
\*Compliant with RoHS and REACH\*  
\*Meet the HF/Halogen Free,need to customize\*  
\*Contact CJT for details\*

## Standards



## Assembly layout

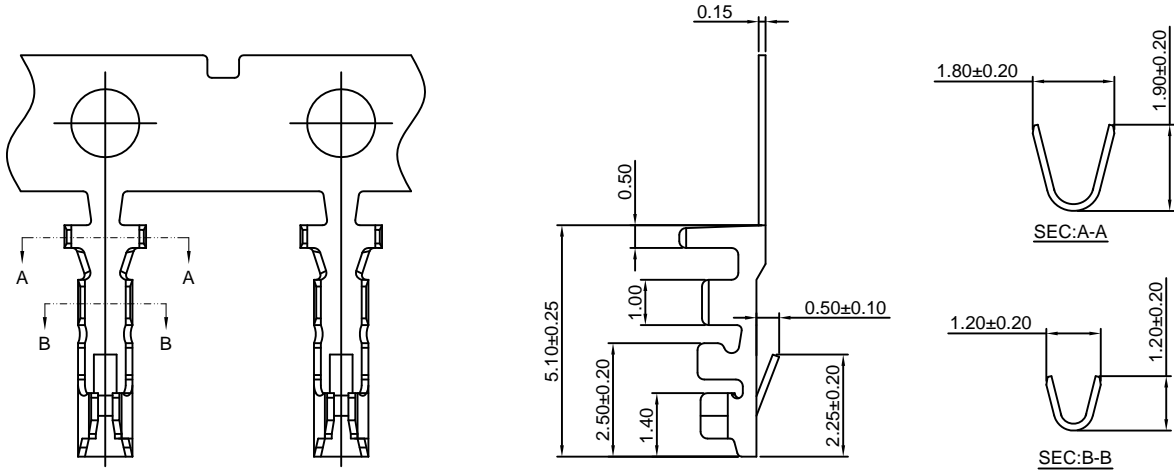


### A1801-T

1.80mm pitch Crimp Terminal

**Reference Informations:**

\* Used in CJT A1801H, HA-2P series Housing



Ordering information & Specifications:

Unit:mm

Part NO.	Wire Range	Insulation O.D.	Material	Finish	Qty/reel
A1801-TP	AWG#18-#24	2.70mm(max)	Phosphor Bronze	Tin over Nickel	10,000 PCS

### A1801H-2P

1.80mm pitch Housing

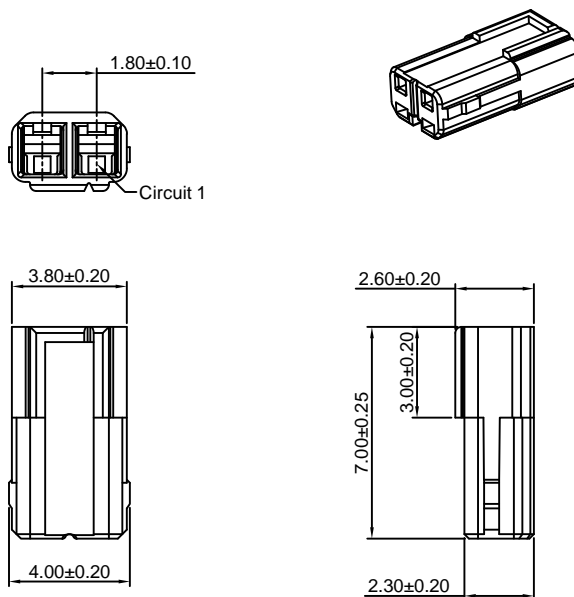
**Reference Informations:**

\*Material:Nylon 66,UL94V-0

\*Suitable CJT A1801-T series Terminal

\*Mates with CJT A1801WR-S-XP series Wafer

\*Color:White



Ordering Information:

A1801H-2P - \*\*\* - \*\*  
1 2 3

1.Part No.

2.Material:

(blank):Nylon 66,UL94V-0

GWT:Nylon 66,UL94V-0,GWT 750℃

3.Color:

(blank):White

RD:Red

YL:Yellow

Unit: mm

### A1801HA-2P

1.80mm pitch Housing

**Reference Informations:**

- \*Material:Nylon 66,UL94V-0
- \*Suitable CJT A1801-T series Terminal
- \*Mates with CJT A1801WRA-S-XP series Wafer
- \*Color:White

**Ordering Information:**

A1801HA-2P - \*\*\*  

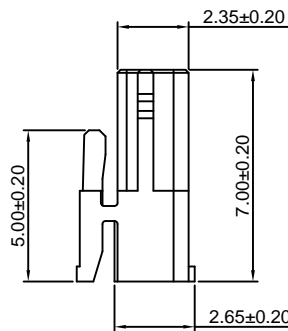
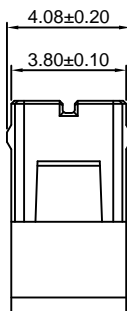
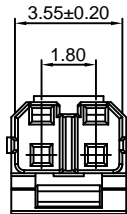
1	2
---	---

1.Part No.

2.Material:

(blank):Nylon 66,UL94V-0

GWT:Nylon 66,UL94V-0 GWT 750 °C



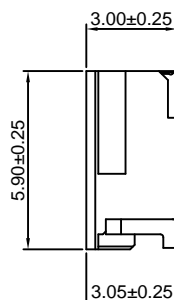
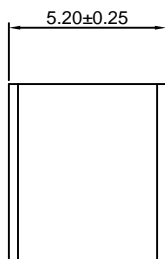
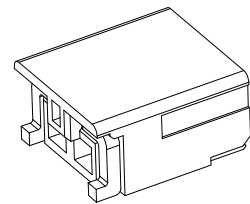
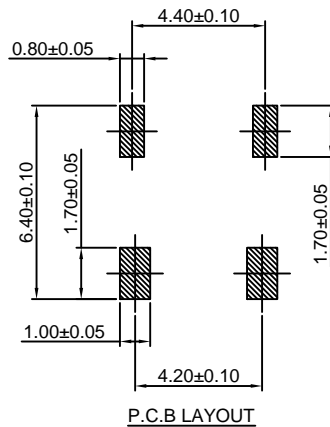
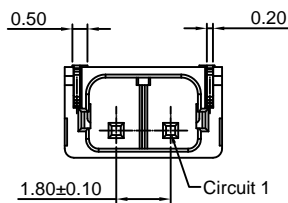
Unit: mm

### A1801WR-S-2P

1.80mm pitch 90° Wafer -SMT TYPE

**Reference Informations:**

- \*Material:Pin:Brass/Tin over Nickel  
Insulator:LCP,UL94V-0
- \*Mates with CJT A1801H-2P series Housing
- \*Color:White



**Ordering Information:**

A1801WR-S-2P - \*\*\* - \*\*  

1	2	3
---	---	---

1.Part No.

2.Material:

(blank):LCP,UL94V-0

GWT:LCP,UL94V-0,GWT 750 °C

3.Color:

(blank):White

RD:Red

YL:Yellow

Unit: mm

## A1801WRA-S-2P

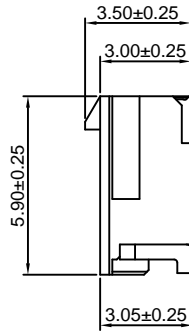
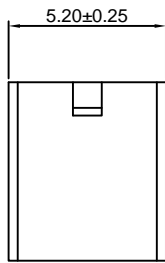
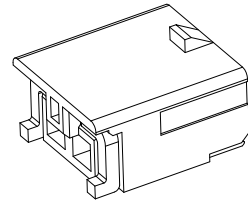
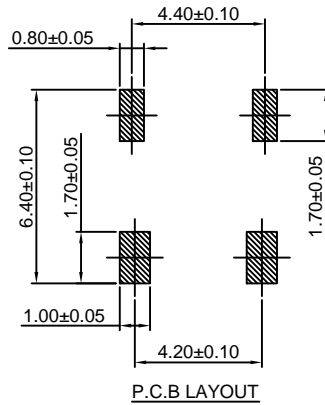
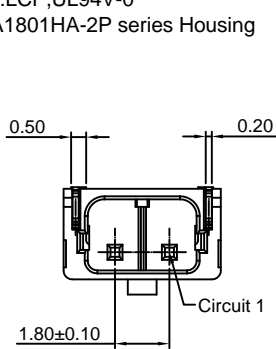
1.80mm pitch 90° Wafer -SMT TYPE

**Reference Informations:**

\*Material:Pin:Brass/Tin over Nickel  
Insulator:LCP,UL94V-0

\*Mates with CJT A1801HA-2P series Housing

\*Color:Ivory



**Ordering Information:**

A1801WRA-S-2P - \*\*\*  
1 2

1.Part No.

2.Material:

(blank):LCP,UL94V-0

GWT:LCP,UL94V-0,GWT 750℃

Unit: mm