

Ordering Information:

A2509SA-XP - ***
1 2

1.Part No.

2.Color:

(Blank):Black

NAT:Natural

SPECIFICATIONS:

Current Rating: 3A AC,DC

Voltage Rating: 250V AC,DC

Temperature Range: -40°C ~ +105°C

Contact Resistance: 20mΩ Max

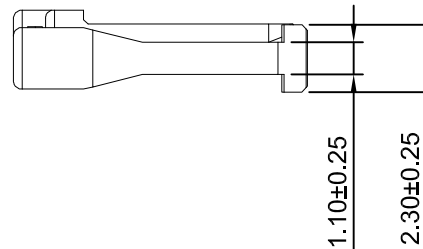
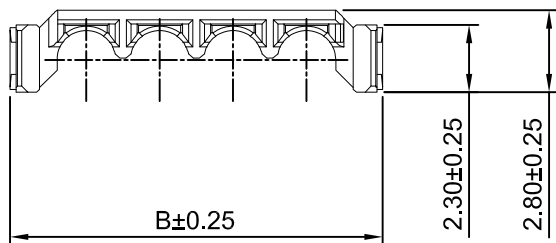
Insulation Resistance: 1000MΩ Min

Withstanding Voltage:1000VAC/minute

Material: PA4T,UL94V-0(Black)

Ordering Information & Dimensions

Circuits	Dimensions(mm)		Circuits	Dimensions(mm)	
	A	B		A	B
2P	2.50	7.70	6P	12.50	17.70
3P	5.00	10.20	7P	15.00	20.20
4P	7.50	12.70	8P	17.50	22.70
5P	10.00	15.20	---	---	---



CJTconn CHANGJIANG CONNECTORS CO.,LTD.

Unit	Scale	Sheet
mm	4:1	1 of 1

Title :
2.50mm PITCH
SeaL

Draw BY:	Approved :
Dengchun Yi	Jack Yin

General Tolerance

x.xx±0.25	PROJECT
x.xxx±0.20	
x.xxxx±0.15	

DRAW NO :	A2509SA-XP	REV	A0
-----------	------------	-----	----

REV	DESCRIPTION	DATE
A0	NEW RELEASE	2019.05.30